

BILLET SBC HEADS

These Alan Johnson cylinder heads have proven themselves under fire by race teams from Nostalgia Top Fuel, Top Fuel Sand Drags, Big Dogs, Top Outlaw Dragster to Top Sportsman.

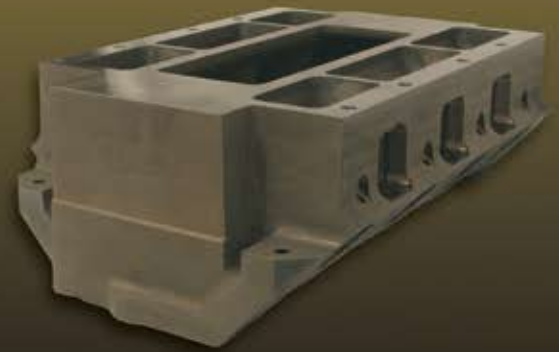


STANDARD FEATURES

- **2.250" Intake and 1.650" Exhaust Valve sizes**
Titanium intake & exhaust valves & Inconel exhaust available from AJPE
- **Intake Valve angle:** 13 x 3° **Exhaust valve angle:** 9 x 0°
- **Chamber Volume:** 53cc **Intake Port:** 344cc **Exhaust port:** 114cc
Designed for 4.125" bore size minimum
- **Heads come O-ringed:** with .051" stainless wire, 4.375" O.D. x .015" protrusion
- **Custom Exhaust header flange pattern:** AJPE flanges are available with 2.00" or 2.250" primary tube sizes.
- **Valve Covers:** uses same covers as Splayed Valve SBC - Sheet Metal covers are available from AJPE

SERVICEABILITY FEATURES

- All Head stud nuts are accessible without removing Valve Springs
- Cylinder head + Manifold design allows removal of heads without disturbing manifold & supercharger
- Sturdy Cast Magnesium Intake manifold available in 9.00", 9.300" & 9.500" deck heights
- Intake Ports & manifold are sealed with O-rings
- Intake manifold will accept Burst panel in front or rear
Available with distributor hole machined
- AJPE "Symmetrical Port" cylinder head design eliminates typical SBC hot spot in center of head and gasket
- No more wondering if head gaskets will need replacement after each run!



VALVE TRAIN FEATURES

- One piece AJPE Rocker Girdle Assembly removes with 9 studs & nuts
- AJPE Billet Rocker Arms, with oversize shafts and bearings
- Rocker ratios are available from 1.6 to 2.0
- Uses all straight rockers, no "Dog leg" or "Offset Rockers" needed
- Requires offset lifters, like splayed valve SB GM



VALVE LIFT/CFM	.800"	.700"	.600"	.500"	.400"	.300"	.200"	Min Area	Max Area	Avg Area
2.250" Intake Valve	420	410	375	326	268	196	125	3.02"	3.919"	3.577"
1.650" Exhaust Valve	319	305	284	255	216	159	105	1.732"	2.808"	2.377"

ALL TESTS DONE ON 4.125" BORE, EXHAUST TESTED WITH 2.100" ID PIPE

PHONE (805) 922-1202

FAX (805) 349-7129

1097 FOXEN CANYON RD.
SANTA MARIA, CA 93454

www.alanjohnsonperformance.com

AJPE

alan johnson performance engineering